



CAM PUSH/CAM PULL CLAMPS

- **Uses:**

The actima cylinder is used when the clamping space is limited. Its robust design and closed mechanism offer indisputable advantages. Actima lever cylinders are usually actuated by pushing. But when you turn the lever bush around, pulling can also actuate the cylinder.

- **Features:**

These clamps are offered in four configurations — push action or pull action in either right hand or left hand rotation. The approach travel is 10mm and does not allow for clamping. In the 2mm clamping travel, the lever remains locked in all positions. Consequently, workpieces can be fastened safely with tolerances of up to 1.5mm. The Actima lever cylinder can be fitted horizontally or vertically.

The mechanism is totally enclosed to avoid finger traps and the ingress of dirt or metal cuttings.

- **Specification:**

All external parts are finished black except the knob which is dull red plastic. The cam roller and the cam faces are case hardened to minimise wear.

- **Installation:**

It is essential that the clamps are installed to clamp on the 'clamping stroke'. Clamping on the 'fast travel' part of the stroke can result in the clamp releasing itself, and allowing the clamp to reach the end of its 'clamping stroke' does not ensure secure clamping.

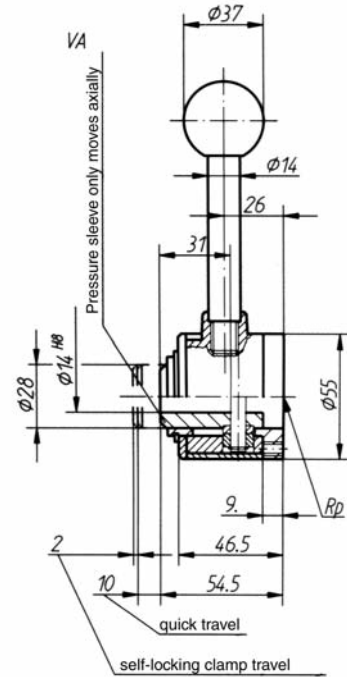
Hand force only should be used in closing the clamps as over tightening with a hammer or lever can result in damage to the units.

CAM PUSH/CAM PULL CLAMPS

CAM PUSH/CAM PULL CLAMPS



Cam operated.
Right hand push.
Rear mounted.



TECHNICAL INFORMATION

Clamp No.	Nominal Holding Force	Weight Kg	Rotation
CP1005	500 daN	0.86 Kg	Push RH
CP1006	500 daN	0.86 Kg	Pull RH
CP1007	500 daN	0.86 Kg	Push LH
CP1008	500 daN	0.86 Kg	Pull LH

